

3D-Lashes™ Eyelash Extensions



Committed to Making you More Beautiful

3D-Lashes™, Semi-Permanent Beautiful Eyelash Extensions!
Lash Extensions Last Up to 2 Months! Longer & Thicker
Natural Eye Lashes!

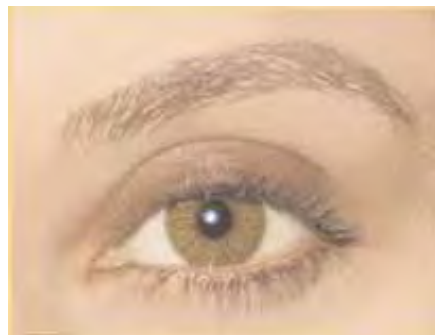
The Amazing 3D Lashes...

3-D Lashes look gorgeous, are incredibly long lasting and weightless on your eyes. 3D-Lashes are resistant to water, showering, sweat, exercise, tears, swimming and even sleeping. Perfect for weddings and all special occasions. 3D-Lashes stay on for up to 2 months or longer so you have beautiful lashes any place, anytime; 3D-Lashes enhance your natural beauty and amazingly increase your inner confidence!

A Breakthrough Lash Technology

3D-Lashes are newly invented eyelash extensions for longer, fuller, very natural looking eyelashes that will last up to 2 months or longer! 3D-Lashes simply transform natural lashes into lush, beautiful, longer lashes.

3D-Lashes incorporated optimum quality products and a state-of-the-art application technique applying one lash at a time onto the existing natural lash. 3D-Lashes are for professional application only; eyelash extension professionals should be certified by 3D-Lashes to ensure optimum results for amazing 3D-lashes.



Frequently Asked Questions

What is New about 3D-Lashes?

3D-Lashes are newly invented eyelash extensions for longer, fuller, very natural looking eyelashes. 3D-Lashes are made to look identical to human lashes. Using a state-of-the-art application technique, one lash at a time is applied onto the existing lash. 3D-Lashes simply transform your natural lashes into lush, beautiful, longer lashes. 3D-Lashes are for professional application only; the entire lash procedure is very comfortable and relaxing. 3D-Lashes are weightless and you feel nothing on your lashes. 3D-Lashes are water-proof; you can shower, exercise and even sleep with them on! 3D-Lashes are a breakthrough lash technology with incredible staying power that will last up to 2 months.

What is the difference between 3D-Lashes and

traditional false lashes? The major differences are the following: adhesive formula; lash type, application technique, lash appearance and lasting duration. Traditional false lashes are usually made with a strip or with multiple lashes knotted together and are applied directly on the eyelid using adhesive formulas that dry hard on the eyelid and lashes. They often cause discomfort to the eyes and may cause your natural lashes to fall out prematurely. Traditional false lashes usually last only a few days to a week, often looking unnatural and feeling heavy on your eyes. 3D-Lashes are made to look identical to human lashes and are crimp resistant; the adhesive is formulated for a permanent bond and dries soft on lashes. The polypeptide bond allows lashes to remain flexible and bouncy. Each 3D-Lash extension is applied directly to the individual lash, one lash at the time via a state-of-the-art technique. The 3D-Lashes are weightless, very comfortable on the eyes, and will not prematurely cause the natural lashes to fall off. 3D-Lashes look so natural and have the incredible bonding power that lasts up to 2 months!

How long does it stay?

Normally up to 2 months, the 3D-Lashes will stay on your lashes for the remaining lash life when applied correctly.

How much does it cost to have 3D-Lashes applied?

A full set of semi-permanent eyelash extensions can cost up to \$100.00 per procedure; it takes approximately 50-90 minutes for a full set to be applied. The approximate amount of lashes applied is around 60 lashes for both eyes (30 on each eye), the cost is dependent upon personal preference and the service program set by the lash professionals. Touch-ups: The natural life of the lashes is about 100 days. Your own eyelashes will grow out on a continuous cycle, so touching up the 3D-Lashes will help to maintain the fullness of lush lashes. Retouching is highly recommended every 2-3 weeks. The cost may range from \$5 - \$50 and should take 10 - 30 minutes for the touch up

The cost of 3D-Lashes Application may vary depending on a few factors:

1. Service location and demand
2. Skill level of the Lash Professional
3. The number of Lashes applied
4. Special offers or customized programs
5. Time spent on the application

What are 3D-Lashes made of? And do they come in different colours and sizes?

3D-Lashes are made of a synthetic material, which is very soft and naturally curved. 3D-Lashes are crimp-resistance and flexible. Size availability ranges from 8mm - 15mm. Currently 3D-Lashes are available in Jet Black, Espresso Brown, Burgundy Red, Velvet Purple, Midnight Blue and Mountain Green.

Do 3D-Lashes damage natural lashes?

No, not at all! 3D-Lashes' adhesive is formulated to create a polypeptide bond, specifically for human lashes. The adhesive dries very soft on lashes, allowing 3D-Lashes to stay flexible and bouncy just like your own lashes. 3D-Lashes will adhere to the lashes softly and comfortably while not damaging your natural lashes or causing the natural lashes to fall out.

Can I wear mascara with my 3D-Lashes?

3D-Lashes naturally darken your lashes, your lashes will look vivid and mascara is not necessary. If desired, you may wear water-based mascara on the tip of the 3D-Lashes for enhancement. Never use waterproof mascara as any type of mascara remover may not be used at all. Rubbing directly on the 3D-Lashes, or using mascara remover will weaken the bonding. Water-based mascara should come off with just soap and water while washing your face or showering.

Can 3D-Lashes be removed?

Yes, at any time for any reason. They can be easily removed using our organic remover. Simply follow the instructions listed on the

3D-Lashes Semi-Permanent Eyelash Extensions



Starter Eyelash Kit

3D-Lashes Hands-on Workshop with Starter Kit

Our all day Hands-on Workshop is designed to perfect your eyelash extension technique. This very extensive training workshop covers everything from basic to advanced application techniques, like the secret to 2 month lash extensions, sealing, product knowledge, removal, caring for the lashes, marketing, and procedure practice.

Your 3D-Lashes Starter Kit offers everything you need to apply 3D-Semi Permanent Eyelashes! This kit includes enough black eyelashes to complete approximately 100 procedures. You can rest assured that you are receiving the highest quality, tapered, polished, beautifully curled lashes in the industry

- Instructional DVD
- A2 Adhesive, 10ml
- Eyelash Adhesive Remover, 15ml
- Sealer, 10ml
- Micro Fiber Brushes, 100pc box
- .15 8 mm Black J Curl .5 gm
- .15 10 mm Black J Curl .5 gm
- .15 12 mm Black J Curl .5gm
- .2 9mm Black J Curl .25 gm
- .2 11 mm Black J Curl .25 gm
- .2 13mm Black J Curl .25gm
- Sanitation Cloth 5 pcs
- 2 Tweezers, Fine Point
- Disposable Sponge w/ Container
- Bio Gel Pads, 24 pr box
- 50 Disposable Adhesive Trays
- Disposal Eyelash Comb 25pcs
- Cotton Squares (lint free) 100pc/bag
- Tri-Fold Brochure, 50pcs
- Professional Carrying Case
- Acrylic Caddy



Natural Eyelash Extensions

Our natural lashes are soft and weightless. Made to feel like you are wearing anything. Available in J- curl only.

- 3D50009 – 9 mm approx. 2000 pcs**
- 3D50010 – 10 mm approx. 1700 pcs**
- 3D50011 – 11 mm approx. 1600 pcs**
- 3D50012 – 12 mm approx. 1500 pcs**
- 3D50313 – 13 mm approx. 1200 pcs**



Thick Eyelash Extensions

A thicker more dramatic look. People will be amazed at how real they look.

- 3D50109 – 9 mm approx. 1300 pcs**
- 3D50110 – 10 mm approx. 1000 pcs**
- 3D50111 – 11 mm approx. 800 pcs**
- 3D50112 – 12 mm approx. 750 pcs**
- 3D50113 – 13 mm approx. 700 pcs**
- 3D50114 – 14 mm approx. 600 pcs**

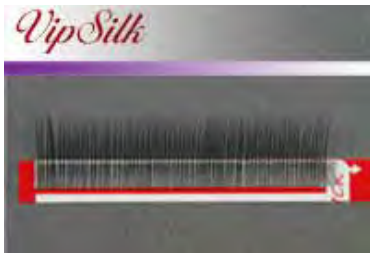


Volumizing Eyelash Extensions

An even thicker and more volumizing lash. These lashes will definitely create the dramatic dark lash look you always wish you had.

- 3D50309 – 9 mm approx. 900 pcs**
- 3D50310 – 10 mm approx. 700 pcs**
- 3D50311 – 11 mm approx. 500 pcs**
- 3D50312 – 12 mm approx. 500 pcs**
- 3D50313 – 13 mm approx. 400 pcs**
- 3D50314 – 14 mm approx. 300 pcs**





VIP Silk Eyelash Extensions "J" Curl .15

These lashes are as soft as mink hair, are made from the finest polyester and have more flexibility and softness. Easy for picking up and saving time.

16 Strips, 260 lashes in each row for a total of approximately 4,160 lashes.

- 3D50509 - 9 mm**
- 3D50510- 10 mm**
- 3D50511 - 11 mm**
- 3D50512 - 12 mm**
- 3D50513 - 13 mm**

VIP Silk Eyelash Extensions "J" Curl .20

These lashes are as soft as mink hair, are made from the finest polyester and have more flexibility and softness. Easy for picking up and saving time.

16 Strips, 185 lashes in each row for a total of approximately 2,960 lashes.

- 3D50609 - 9 mm**
- 3D50610 - 10 mm**
- 3D50611 - 11 mm**
- 3D50612 - 12 mm**
- 3D50613 - 13 mm**

HOW TO USE

Start from the bottom row. Each single row can be removed totally from the base panel and it can be stuck to other convenient place to use with speed such as the back of the hand.

CAUTIONS

- Do not use from Upper Row
- Keep container cover closed when not in use.
- Keep away from heat, sunlight, dust and children's reach.



3D52426 A2 Adhesive 10ml

New from 3D, this adhesive has 6 month shelf life from purchase date, dries in 6 to 8 seconds, faster set up time, thinner consistency, can be stored at room temperature – no refrigeration require.



3D52428#3 Level 3 MD USA Black Adhesive, 5ml

A professional level glue designed for Eyelash Extension Professionals! This glue is so advanced that you have to be an advanced technician to use it.



3D52440 C-2 Sealer 10ml

Our C-2 Sealer contains Teflon, a strong bonding agent which will increase the bonding strength to all semi-permanent eyelashes! It will also protect the lashes from dust and residue.

Apply the Sealer 10 minutes after the application.

**3D52440-5 Home Care C2-Sealer****5 ml**

This product has been created for home care use. It is recommended that your clients seal their lashes 2 - 3 times per week for optimal wear. The C-2 Sealer is a strong bonding agent that will increase the bonding strength to all semi-permanent eyelashes! It will also protect the lashes from dust and residue.

**MD USA Remover**

Is formulated to gently remove 3D-Lashes without affecting your natural lash. Recommended to use with our Level 2 and 3 adhesives only. Please use with caution and keep from getting it into the eyes.

3D52503 15 ml
3D52502 comes w/ 10 micro-brushes

**3D62004-15 Lash Toner****15 ml**

3D-Lashes Toner removes protein from the eyelashes which allows the eyelash extension adhesive to reach its maximum bonding strength and thus, extending the duration of the eyelash extension.

USE: If client comes in with no make-up on then use a Micro Fiber brush or a disposable sponge tip applicator and brush it onto the lashes and then wipe clean with a damp cotton round. Then apply the eyelash extensions.

**3D62003 Gentle Foam Cleanser****50 ml**

This foaming eyelash extension cleanser is great for your beauty station and it is to be used for removing eye make-up while wearing eyelash extensions. This product is gentle enough to be used daily and it will keep the lashes clean and free of residue.

**3D80200-SET Mini Acrylic Caddy Set**

This set will save you time and helps to insure a beautiful procedure and includes: Acrylic Caddy, 10 Center Vials, 50 Replacement Cups, and 50 Replacement Sponges.

Eyelash Procedure Tools**3D71010 Micro Fiber Brushes****100 pc**

These extra fine fiber-tipped brushes allow for precise applications, retaining only small amounts to avoid wasteful usage of product. Perfect for applying C-2 Sealer, or removing a 3D-Lash. They are precise and allow you to work one lash at a time with ease. Great for eyelash perming procedure as well!

**3D52510 Disposable Adhesive Holders****50 pk**

Your 3D-Lashes disposable adhesive holders are a great tool during and after your procedure.

Here is a money saving tip...

Place a SMALL AMOUNT of adhesive in one of the 5 available compartments. Your adhesive will stay moist for hours when it is kept in the adhesive holder. Use another clean compartment after the treatment to hold your sealer. Using adhesive holders will save you time and money and they are disposable adding another element of sanitation to your procedure.

**3D71308-4PC Bio Gel Bottom Eye Pads****2 Pair**

Fiberless, chemical free, no tape required and pre-cut.

**3D52902 Sponge****10 pcs**

This sponge is perfect as a pallet to hold 3D-Lashes during a procedure. The sponge allows you to pick up the lashes with ease. It is light-weight and presents a professional image.

**3D80007 Sponge Holder****10 pc**

Holds large round sponges in a convenient container.

**3D71104 Surgical Tape**

Our 1/2" tape is used when preparing your eye-gel pads covering any loose fibers.

**3D52602 Disposable Comb/Brush****50 pk**

The disposable comb/brush serves a dual purpose. First it is used during the procedure to separate your client's lashes. Secondly it should be given to your client for their post care. Your customers will appreciate the gift.

**3DEL-P Disposable Face Mask,****50 pcs**

3D-Lashes is proud to offer professional products. You will be very close to your client during the eyelash extension procedure and your client will appreciate your professionalism when using our soft and comfortable pleated surgical mask.

**Reception Brochure Display**

Includes Acrylic Stand (8 1/2 x 11) with pocket for brochures, 1 glossy insert for the stand and 50pc Tri-Fold Brochures. This item is a must have for your reception area!

**3D90018 "Dream with Reality"****Gray Poster**



8x11 Tri-Fold Brochure

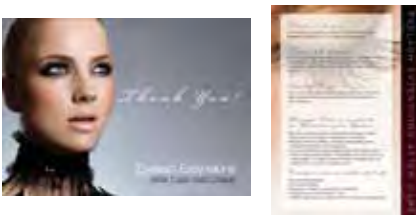
50 pc



3D90014 Postcards

50 pc

Perfect direct mail piece to advertise 3D Lash Extensions.



3D90020 3D Thank You Card/Lash Care Card

50 pc

After care instructions for clients on how to maintain and properly care for the lashes.



3D80200-1 Acrylic Caddy

Our acrylic caddy set saves time and helps insure a beautiful procedure



3DFAN Mini Fan

Use it for eyelash extensions to help speed up drying process. Takes 2 AA batteries (not included).



3D61001 Fine Point Tweezer

4 .75"

Carefully selected for 3D-Lashes semi-permanent extensions, these tweezers were designed for precision and comfort. 3D-Lashes tweezers are made of premium quality stainless steel.



3D91004 Client Profile Forms

3D Lashes Client Profile Forms are great for salon/spa owners. With these forms you are able to keep track of your clients records, such as their name, previous treatments, products used, etc. This was you can give your clients that extra special care knowing their background with extensions. 8 1/2 x 11 - 50pc/pad.